

# Alat za pogonsku osovinu za BB30

1625/2



## upotreba



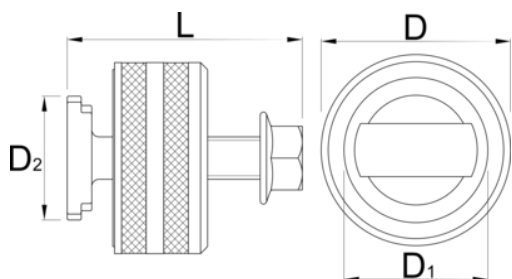
## Atributi proizvoda

- Alat je dizajniran za demontažu i montažu pogonskih sklopova BB30 pogonske osovine

## Profili



[./hr/support/warranty](https://hr.support.warranty)





A

B

C

D



621660

67

54

17

35

19

346

## Maloprodajno pakiranje



MA

MB

MC



621660

57

57

93

364

## Transportno pakiranje



TA

TB

TC



621660

1

57

57

93

364

## Rezervni djelovi



Guide head 35mm for 1625/2 - BB30



Plastic ring for 1625/2 - BB30