

# Crimp grip pliers

427/4AG



## Profiles

---

**Premium** 

## Product features

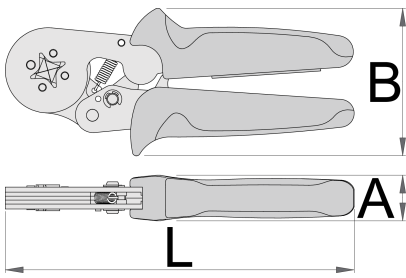
- material: premium chrome vanadium steel
- surface finish: phosphated to standard ISO 9717
- heavy duty double - component handles



## Advantages:

- strong metal crimping profile with electrical plating
- reinforced connecting spring for longer usage life
- square crimping performs a better contact than traditional crimping profile

## Usage:

- for cord end sleeves 0,08 - 10mm<sup>2</sup>/AWG28 - 7



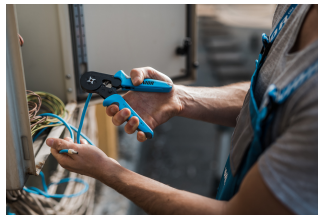
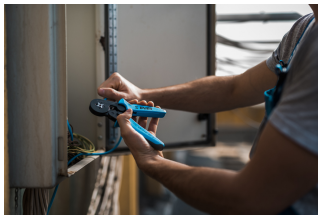
	L	B	A	
621550	180	76	20	433

\* Images of products are symbolic. All dimensions are in mm, and weight is in grams. All listed dimensions may vary in tolerance.

### Usage (pictures)



### Photo (pictures)





## Frequently asked questions

### **Why is it necessary to use crimping pliers for cable connections? Why not simply use combination pliers?**

When working with cable connections, you must use crimping pliers because this is the only way to press the connections together correctly and accurately. This is a requirement for the safety of the joints and provided for by the grooves/shapes on the pliers.