

# Bolt cutters with interchangeable triangular cutting edges

596PLUS/6G



## 프로파일



## 제품 특징

- material: premium hard chrome vanadium steel
- jaws exchangeable and adjustable in three position, entirely hardened and tempered
- steel handles, lacquered, heavy duty plastic handles

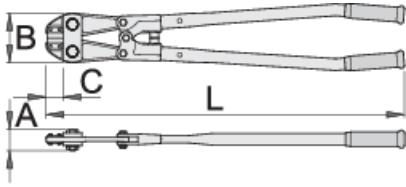
## 장점:

- extreme strength and minimum weight
- outstanding resistance to the maximum forces generated during cutting
- complete anti-corrosion resistance
- straightforward guidance and proper handling
- shock absorber for the prevention of injuries
- triangular blade - threefold longer service life
- the procedure for adjusting the jaw cutting edges

## How to adjust the cutting edges?

- Release the safety nut.
- Take the screw out of the groove and turn it until there is no spacing between the cutting edges

- Secure the safety nut.



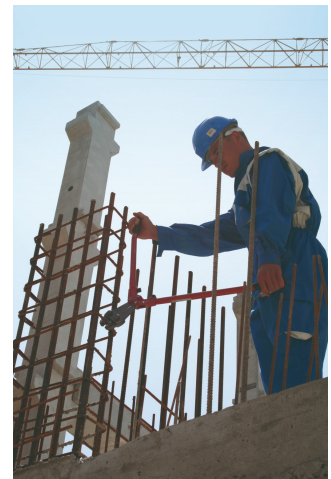
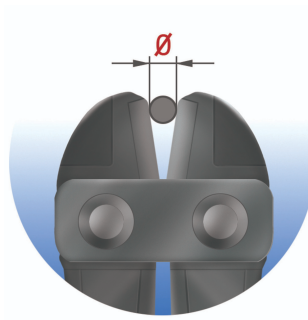
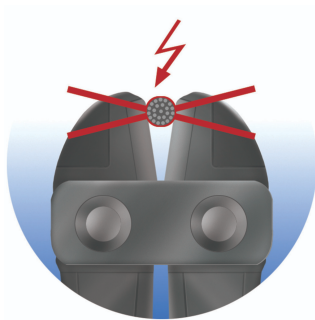
	L	A	B	C	
615256	750	43	96	46	4060
615257	900	47	109	50	6300

cutting capacity (10N=1kg)

	L	max 1560 N/mm <sup>2</sup> Ø↑	max 750 N/mm <sup>2</sup> Ø↑
615256	750	8	13
615257	900	9	16

\* Images of products are symbolic. All dimensions are in mm, and weight in grams. All listed dimensions may vary in tolerance.

## 사용법 (사진)



## 스페어 파트



Spare jaw for 596PLUS/6G



Spare cutting edges for 596PLUS/6G



Spare cutting edge for 596PLUS/6G

## 자주 묻는 질문

**볼트 커터 날 사이의 간격을 없앨 수 있습니까?**

할 수 있습니다. 방법은 메뉴얼에 설명되어 있습니다.

**삼각날을 바꾸면 간극도 조정해야 하는 건가요?**

설치할 때 블레이드가 평행하게 설치되고 나사가 그에 따라 조여졌는지 확인해야 합니다.