

# 钢筋钳（可换三角切割刀）

596PLUS/6G



## 配置文件



## 产品属性

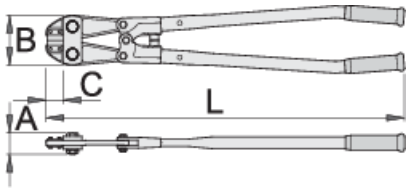
- 材料：切割器 - 特种工具钢、锻造、完全淬火与回火
- 夹钳可在三个位置更换和调整，完全淬火与回火
- 管钢把手、上漆、重型塑料把手

## 优势：

- 极限强度和最小重量
- 杰出的抗切削过程产生的最大力量
- 完全抗腐蚀性
- 直接指导和适当处理
- 防止受伤的减震装置
- 三角刀刃 - 三倍的使用寿命
- the procedure for adjusting the jaw cutting edges

## 如何调整切割边缘？

- 拆卸安全螺母
- 将螺钉从槽内取出，转动直到没有切削刃之间的间距
- 固定安全螺母



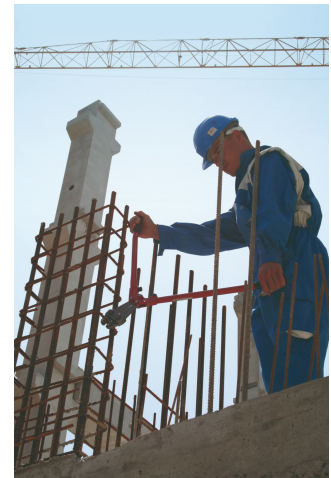
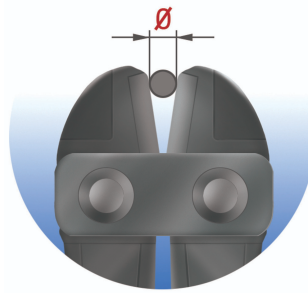
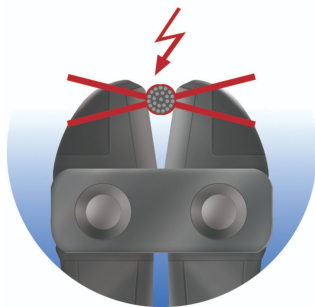
	L	A	B	C	
615256	750	43	96	46	4060
615257	900	47	109	50	6300

cutting capacity (10N=1kg)

	L	max 1600 N/mm <sup>2</sup> Ø↑	max 650 N/mm <sup>2</sup> Ø↑
615256	750	8	13
615257	900	9	16

\* Images of products are symbolic. All dimensions are in mm, and weight in grams. All listed dimensions may vary in tolerance.

### 用途 (pictures)



### 配件



596PLUS/6G的备用夹钳



596PLUS/6G的备用切割边



596PLUS/6G的备用切割刃

## Frequently asked questions

### **Can we eliminate the clearance between the blades of the bolt cutter?**

Of course. The procedure is described in the instructions.

### **If we change the triangular blade, do we have to adjust the clearance as well?**

When installing, it is necessary to make sure that the blades are installed in parallel and that the screws are tightened accordingly.