

Boutenschaar

596/6A



Profielen

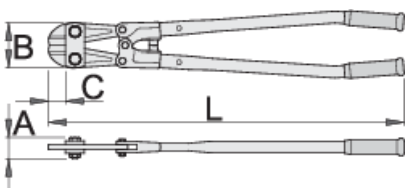


Product attributen

- material: cutters from premium plus carbon steel
- cutting edges separately induction hardened
- steel handles, lacquered, heavy duty plastic handles

Voordelen:

- shock-absorbers on the joints absorb shocks on the handles, which happen when cutting reinforcing rod
- protection of the eccentric screws for adjustment of blades with forged recesses ensures 100% protection against unscrewing



610963

L

300

A

26

B



40

C


16



737

	L	A	B	C	
610964	350	26	55	24	805
610965	450	34	70	36	1500
610966	600	38	84	40	2600
610967	750	43	96	46	3950
610968	900	47	109	50	6300
612984	1050	48	120	46	6900

knipcapaciteit (10N=1kg)

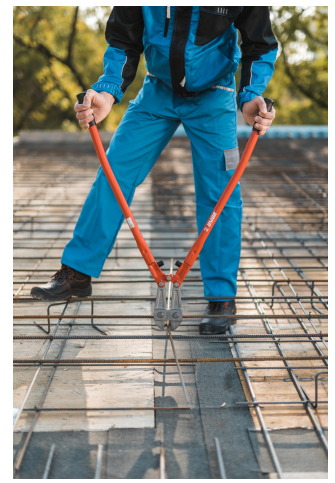
	L	max 1600 N/mm ² Ø↑	max 650 N/mm ² Ø↑
610963	300	3	5
610964	350	3,5	5
610965	450	5	8
610966	600	7	10
610967	750	8	13
610968	900	9	16
612984	1050	10	19

* Afbeeldingen van producten zijn symbolisch. Alle afmetingen zijn in mm en gewicht in gram. Alle vermelde afmetingen kunnen variëren in tolerantie.

Gebruik (Afbeeldingen)



Foto (Afbeeldingen)



Onderdelen



Reserve onderdelen voor 596/6A

Veelgestelde vragen

Can we eliminate the clearance between the blades of the bolt cutter?

Of course. The procedure is described in the instructions.