

钢筋钳

596/6A



配置文件

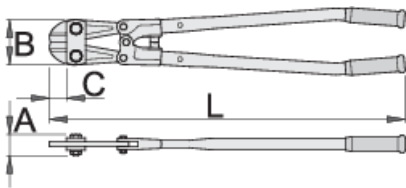




产品属性



- 材料：切割器 - 特种工具钢、锻造、完全淬火与回火
- 独立感应淬火切削刃
- 管钢把手、上漆、重型塑料把手

优势：


- 接头上的减震器可以减少在切割加固杆时出现在把手上的震动
- 带保护的偏心螺丝调整两翼锻造凹处为防止拧松提供保护



	L	A	B	C	
610963	300	26	40	16	737
610964	350	26	55	24	805

	L	A	B	C	
610965	450	34	70	36	1500
610966	600	38	84	40	2600
610967	750	43	96	46	3950
610968	900	47	109	50	6300
612984	1050	48	120	46	6900

cutting capacity (10N=1kg)

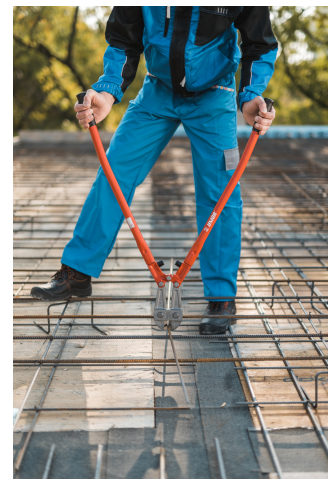
	L	max 1560 N/mm ² Ø↑	max 750 N/mm ² Ø↑
610963	300	3	5
610964	350	3,5	5
610965	450	5	8
610966	600	7	10
610967	750	8	13
610968	900	9	16
612984	1050	10	19

* Images of products are symbolic. All dimensions are in mm, and weight in grams. All listed dimensions may vary in tolerance.

用途 (pictures)



Photo (pictures)



配件



596/6A 备用零件

Frequently asked questions

Can we eliminate the clearance between the blades of the bolt cutter?

Of course. The procedure is described in the instructions.