

Pinza per idraulici isolata con giunto scatolato

447/1VDEBI



Profili



Standard

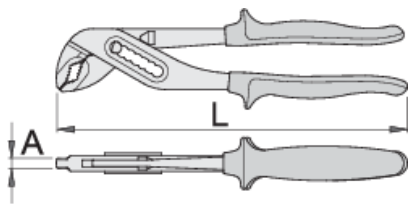
DIN EN IEC 60900 (VDE 0682-201):2019-04; EN IEC 60900:2018

Attributi del prodotto

- materiale: acciaio al cromo vanadio premium
- interamente bonificato
- superfici di lavoro temprate a induzione
- finitura superficiale: cromata ISO 1456:2009
- robusta impugnatura bicomponente
- conforme allo standard ISO 8976 e EN IEC 60900

Vantaggi:

- apertura ganasce regolabile in 7 posizioni
- speciale rigonfiamento impedisce che le dita vengano schiacciate tra i manici delle pinze



L

A

Omax



611993

240

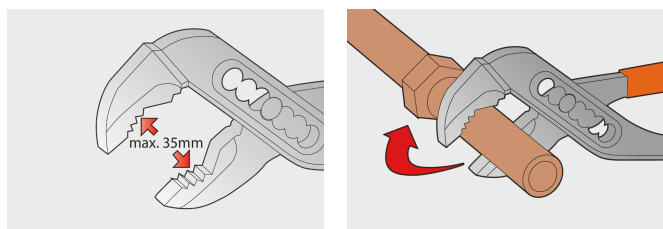
6.5

35

367

* Le immagini dei prodotti sono puramente simboliche. Tutte le dimensioni sono in mm, peso in grammi.

Utilizzo (pictures)



Frequently asked questions

Are certified insulated tools made through a different procedure than non-certified insulated tools?

The tools are made according to the same procedure.

Are insulated (VDE) tools considered as personal protective equipment (PPE)?

According to EU regulations, VDE tools are not considered as PPE.

Is it possible to work with insulated pliers under electrical voltage?

Yes, but only by professionals who follow safety requirements and use additional personal protective equipment.

Are the VDE tools only being sampled in series production?

The high voltage test (at 10kV) is performed fully on each tool. Other tests are performed in accordance with the EN60900 standard.