

Комбинирана клешта

406/1VDEBI



Profiles

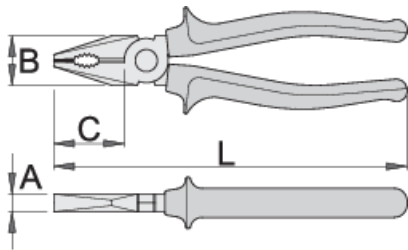


Standards

DIN EN IEC 60900 (VDE 0682-201):2019-04; EN IEC 60900:2018

Product features

- материјал: специјален плус јаглороден челик
- ковани, целосно појачани и калени
- ивиците за сечење се индукционо појачани
- полирани челюсти
- завршна површина: хромирани по стандард EN 12540
- робусни двокомпонентни рачки, изолирани
- изработена според стандард ISO 5746 и EN IEC 60900



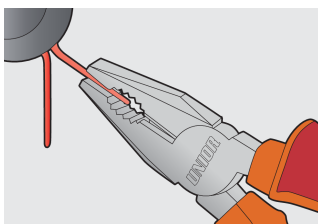
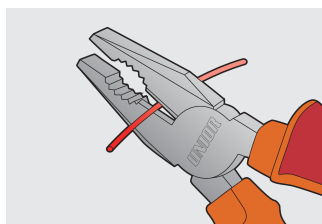
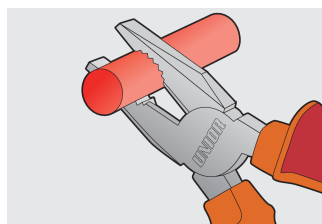
	L	B	C	A	
610421	160	24	35	9.5	224
610422	180	27	38	10	274
610423	200	29	41	10.5	344
610424	220	32	47	11	424

Комбинирани клешти капацитет на сечење (10N=1kg)

	L	max 1560 N/mm ² Ø↑	max 750 N/mm ² Ø↑
610421	160	1,6	2,0
610422	180	1,8	2,5
610423	200	2,0	2,5
610424	220	2,0	3,0

* Сликите на производите се симболични. Сите димензии се во мм, тежината е во грамови. Сите наведени димензии може да се разликуваат во ниво на толеранција

Usage (pictures)



Safety tips



- Pliers should be oiled regularly. A drop of oil at the hinge will lengthen the tool life and assure easy operation.
- When cutting wire with pliers, you should always wear glasses or goggles.



- Don't use pliers for cutting hardened wire, unless specifically manufactured for this purpose.
- Don't expose pliers to excessive heat. This may ruin the tool.
- Don't use pliers as a hammer.

- Don't hammer on the handles. They may crack or break.
- Don't extend the length of plier handles to secure greater leverage.
- Don't use pliers on nuts or bolts. A wrench will do a better job and with less risk of damage to the fastener.

Frequently asked questions

Are certified insulated tools made through a different procedure than non-certified insulated tools?

The tools are made according to the same procedure.

Are insulated (VDE) tools considered as personal protective equipment (PPE)?

According to EU regulations, VDE tools are not considered as PPE.

Is it possible to work with insulated pliers under electrical voltage?

Yes, but only by professionals who follow safety requirements and use additional personal protective equipment.

Are the VDE tools only being sampled in series production?

The high voltage test (at 10kV) is performed fully on each tool. Other tests are performed in accordance with the EN60900 standard.