

Tool carriage Euromotion

940EM2

NEW



Profiles



Product features

- material: premium PLUS sheet metal
- central locking system with a lock and folding key
- lock with key included also foam keyring
- oil and acid resistant casters of a diameter of 125mm, one with brake, which blocks spinning and swiveling of the caster

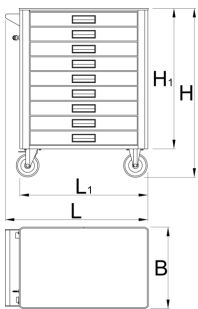
- wide range of accessories
- blind nuts for fixing accessories are mounted on the carriage.
- coated with eco colour of Qualicoat quality standard
- static load capacity of carriage without casters: 1600kg
- dynamic load capacity of carriages: 500 kg
- maximum capacity of each drawer: 45kg
- 8 drawers (7x L 563 x W 365 x H 70mm, 1x L 563 x W 365 x H 150mm)
- basic dimensions with handle and casters L 780 x W 440 x H 923mm
- total volume of drawers: 145 litres
- drawers compatible with SOS tool trays 1/3, 2/3, 3/3

Advantages:

- Full extension drawers with soft closing mechanism
- ergonomic handle for easy opening of drawer
- drawer fronts can be customized with graphic design as separate order
- improved colour durability

Why Choose Unior:

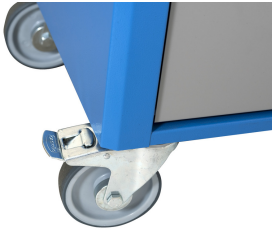
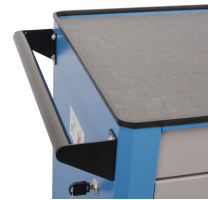
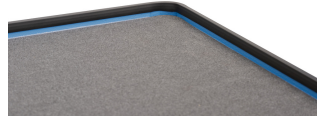
- Unior is a renowned name in the tool industry, synonymous with quality and reliability. With century of experience, Unior products are trusted by professionals worldwide for their superior performance and innovative design.



	L	B	H	L1	H1	
640340	780	440	923	700	768	57800

* Images of products are symbolic. All dimensions are in mm, and weight is in grams. All listed dimensions may vary in tolerance.

Usage (pictures)



Accessories



Set of plastic boxes with base plate



ABS plate for 940E and 940EV



Wooden plate for 940E and 940EV



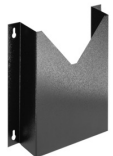
Holder for bottles for 940EV



Screwdrivers hanger for 940E and 940EV



Paper holder for 940EV



Document holder for 940E and 940EV



Sheet metal basket for 940EV

Spare parts



Lock with keys



Set of casters

Related products



Tool carriage Euromotion



Tool carriage Europlus



Tool carriage Hercules