

# Tool carriage Euromotion

940EM2



## 配置文件



## 产品属性

- 材料:金属板材
- 锁紧装置
- lock with key included also foam keyring
- 轮子直径125mm，提搞灵活性和稳定性
- 可添加挂件

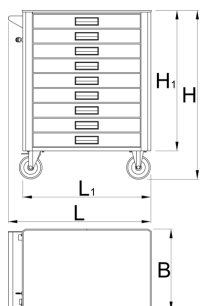
- 固定配件用压铆螺母安装在工具车内
- 环保无铅镉涂层
- 无轮静态负载能力：1600公斤
- 车厢载荷能力:500公斤
- 每层抽屉载荷能力：45公斤
- 8 drawers (7x L 563 x W 365 x H 70mm, 1x L 563 x W 365 x H 150mm)
- basic dimensions with handle and casters L 780 x W 440 x H 923mm
- 抽屉总容量：145升
- 抽屉兼容SOS工具托盘1/ 3,2 / 3,3 /3

#### 优势：

- Full extension drawers with soft closing mechanism
- ergonomic handle for easy opening of drawer
- drawer fronts can be customized with graphic design as separate order
- improved colour durability

#### Why Choose Unior:

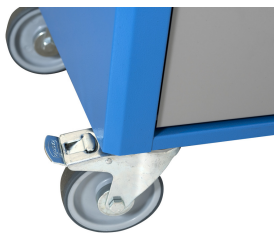
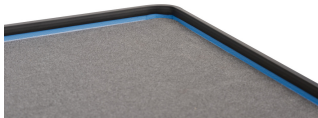
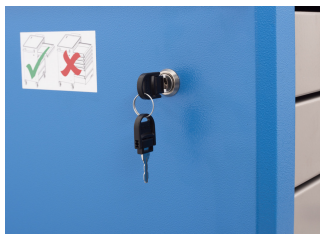
- Unior is a renowned name in the tool industry, synonymous with quality and reliability. With century of experience, Unior products are trusted by professionals worldwide for their superior performance and innovative design.



Barcode	L	B	H	L1	H1	Weight
640340	780	440	923	700	768	57800

\* Images of products are symbolic. All dimensions are in mm, and weight in grams. All listed dimensions may vary in tolerance.

#### 用途 (pictures)



## Accessories



一套带底座的塑料盒



940E和940EV的ABS板



940E和940EV木质板



940EV瓶托



940E和940EV螺丝刀架



940EV纸架



940E和940EV文件架



940EV钣金挂篮

## 配件



Lock with keys



Set of casters

## Related products



Tool carriage Euromotion



欧式工具车



大力士工具车