

# Suspension top cap socket

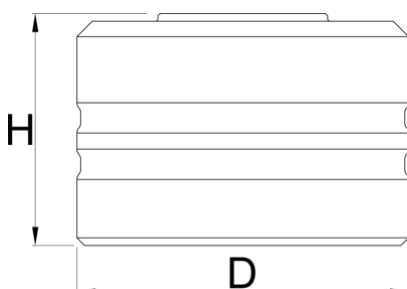
1783





NOU



## Caracteristicile produsului

- Made from aluminum, CNC machined, and red anodized.
- No chamfer socket design for an improved fit with the low top cap profile.
- Short socket design to reduce the socket coming off the top caps during wrenching
- 1/2" square drive makes it easy to use with torque wrenches, ratchets and fixed handles such as our Pro Socket Handle.



|  |  | D  | H  |  |  |
|--|---|----|----|---|---|
| 629822   | 23  | 32 | 30 | 1/2"  | 37  |
| 629823   | 24  | 33 | 30 | 1/2"  | 39  |
| 629824   | 26  | 35 | 30 | 1/2"  | 44  |
| 629825   | 27  | 36 | 30 | 1/2"  | 47  |
| 629826   | 28  | 38 | 30 | 1/2"  | 54  |
| 629827   | 30  | 40 | 30 | 1/2"  | 57  |
| 629828   | 32  | 43 | 30 | 1/2"  | 57  |

\* Imaginea produsului este simbolica.Toate dimensiunile sunt exprimate în mm,greutatea în grame.

0 (pictures)

