

Suspension top cap socket

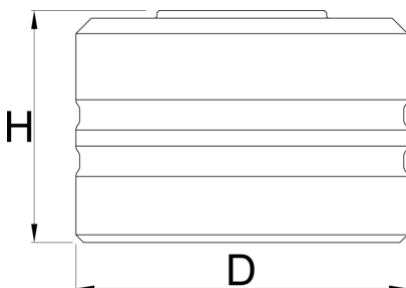
1783





ÚJ



Termékjellemzők

- Made from aluminum, CNC machined, and red anodized.
- No chamfer socket design for an improved fit with the low top cap profile.
- Short socket design to reduce the socket coming off the top caps during wrenching
- 1/2" square drive makes it easy to use with torque wrenches, ratchets and fixed handles such as our Pro Socket Handle.



|  |  | D | H |  |  |
|--|---|----|----|---|---|
| 629822 | 23 | 32 | 30 | 1/2" | 37 |
| 629823 | 24 | 33 | 30 | 1/2" | 39 |
| 629824 | 26 | 35 | 30 | 1/2" | 44 |
| 629825 | 27 | 36 | 30 | 1/2" | 47 |
| 629826 | 28 | 38 | 30 | 1/2" | 54 |
| 629827 | 30 | 40 | 30 | 1/2" | 57 |
| 629828 | 32 | 43 | 30 | 1/2" | 57 |

* A termékeképek illusztrációk. Minden feltüntetett méret milliméterben, a tömegek grammban. Az összes feltüntetett méret eltérhet a toleranciának megfelelően.

Használat (pictures)

