

Suspension top cap socket

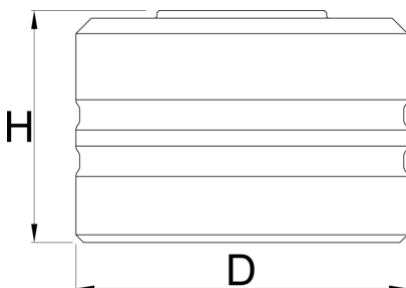
1783





NOVO



Atributi proizvoda

- Made from aluminum, CNC machined, and red anodized.
- No chamfer socket design for an improved fit with the low top cap profile.
- Short socket design to reduce the socket coming off the top caps during wrenching
- 1/2" square drive makes it easy to use with torque wrenches, ratchets and fixed handles such as our Pro Socket Handle.



		D	H		
629822	23	32	30	1/2"	37
629823	24	33	30	1/2"	39
629824	26	35	30	1/2"	44
629825	27	36	30	1/2"	47
629826	28	38	30	1/2"	54
629827	30	40	30	1/2"	57
629828	32	43	30	1/2"	57

* Slike proizvoda su simbolične. Sve dimenzije su u mm, masa je u g.

upotreba (pictures)

