

# Crucior de scule

940EM1

NOU



## Caracteristicile produsului

- tabla cu gauri perforate
- sistem de inchidere
- lock with key included also foam keyring
- noile roti diam. 125 mm pentru imbunatatirea mobilitatii si stabilitatii
- posibilitate de adaugare accesorii
- Nituri filetate pentru fixarea accesoriiilor sunt montate pe carucior.
- vopsele cu vopsele ecologice fara cadmiu si plumb
- capacitatea statica a caruciorului: 1600 kg
- capacitatea de încărcare dinamică a cărucioarelor: 500 kg
- capacitate sertare 45 kg

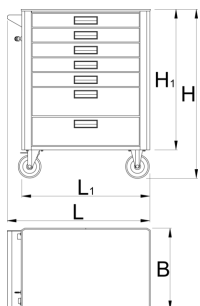
- 7 sertare ( cinci de dimensiunea de 563x365x70mm, doua de dimensiunea 563x365x150mm)
- basic dimensions with handle and casters L 780 x W 440 x H 923mm
- Volumul total de sertare: 140 litri
- sertare compatibile cu tăvi de unelte SOS 1/3, 2/3, 3/3

#### Avantaje:

- full extension drawers with soft closing mechanism
- ergonomic handle for easy opening of drawer
- drawer fronts can be customized with grafic design as separate order
- improved colour durability

#### Why Choose Unior:

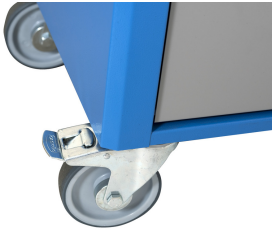
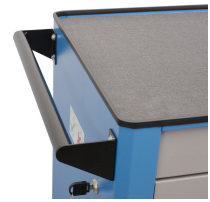
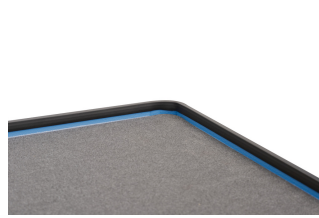
- Unior is a renowned name in the tool industry, synonymous with quality and reliability. With century of experience, Unior products are trusted by professionals worldwide for their superior performance and innovative design.



Barcode	L	B	H	L1	H1	Icon
629589	780	440	923	700	768	53600

\* Imaginea produsului este simbolica. Toate dimensiunile sunt exprimate în mm, greutatea în grame.

0 (pictures)



## Piese de schimb



Lock with keys



Set of casters

## Related products



carucior de scule EUROPLUS



Carucior de scule "HERCULES"