

# Gereedschapswagen Euromotion

940EM1

NIEUW



## Product attributen

- materiaal: premium PLUS plaatstaal
- central locking system with a lock and folding key
- slot met sleutel inbegrepen en foam-sleutelhanger
- oil and acid resistant casters of a diameter of 125mm, one with brake, which blocks spinning and swiveling of the caster
- wide range of accessories
- blind nuts for fixing accessories are mounted on the carriage.
- coated with eco colour of Qualicoat quality standard
- static load capacity of carriage without casters: 1600kg
- dynamic load capacity of carriages: 500 kg

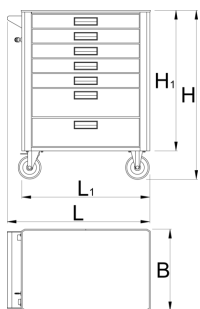
- maximum capacity of each drawer: 45kg
- 7 drawers (5x L 563 x W 365 x H 70mm, 2x L 563 x W 365 x H 150mm)
- basic dimensions with handle and casters L 780 x W 440 x H 923mm
- total volume of drawers: 140 litres
- drawers compatible with SOS tool trays 1/3, 2/3, 3/3

#### Voordelen:

- full extension drawers with soft closing mechanism
- ergonomic handle for easy opening of drawer
- drawer fronts can be customized with grafic design as separate order
- improved colour durability

#### Why Choose Unior:

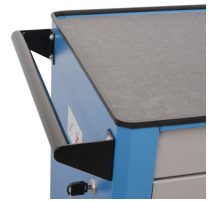
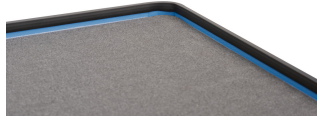
- Unior is a renowned name in the tool industry, synonymous with quality and reliability. With century of experience, Unior products are trusted by professionals worldwide for their superior performance and innovative design.



	L	B	H	L1	H1	
629589	780	440	923	700	768	53600

\* Afbeeldingen van producten zijn symbolisch. Alle afmetingen zijn in mm en gewicht in gram. Alle vermelde afmetingen kunnen variëren in tolerantie.

#### Gebruik (Afbeeldingen)



## Onderdelen



Slot met sleutels



Set of casters

## Gerelateerde producten



Gereedschapwagen Europlus



Gereedschapwagen Hercules