

# Tool carriage Euromotion

940EM1



## 프로파일



## 제품 특징

- 재질: 프리미엄 플러스 메탈
- central locking system with a lock and folding key
- 폼 키링이 포함된 키가 있는 잠금 장치
- oil and acid resistant casters of a diameter of 125mm, one with brake, which blocks spinning and swiveling of the caster

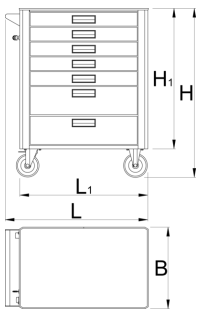
- wide range of accessories
- blind nuts for fixing accessories are mounted on the carriage.
- Qualicoat 품질 표준의 친환경 색상으로 코팅
- static load capacity of carriage without casters: 1600kg
- 캐리지의 동적 부하 용량: 500kg
- maximum capacity of each drawer: 45kg
- 7 drawers (5x L 563 x W 365 x H 70mm, 2x L 563 x W 365 x H 150mm)
- basic dimensions with handle and casters L 780 x W 440 x H 923mm
- 서랍 총 용량: 133리터
- SOS 톨 트레이 1/3, 2/3, 3/3과 호환되는 서랍

#### 장점:

- full extension drawers with soft closing mechanism
- ergonomic handle for easy opening of drawer
- drawer fronts can be customized with graphic design as separate order
- improved colour durability

#### Why Choose Unior:

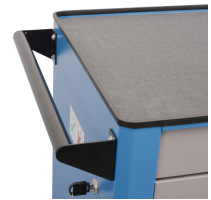
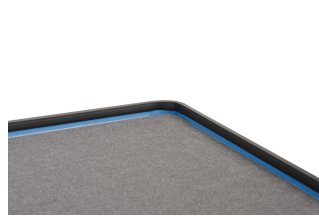
- Unior is a renowned name in the tool industry, synonymous with quality and reliability. With century of experience, Unior products are trusted by professionals worldwide for their superior performance and innovative design.



	L	B	H	L1	H1	
629589	780	440	923	700	768	53600

\* Images of products are symbolic. All dimensions are in mm, and weight in grams. All listed dimensions may vary in tolerance.

#### 사용법 (사진)



## 사진 (사진)



## 액세서리



베이스 패드가 있는 플라스틱 박스 세트



ABS plate for 940E and 940EV



Wooden plate for 940E and 940EV



Holder for bottles for 940EV



Screwdrivers hanger for 940E and 940EV



Paper holder for 940EV



Document holder for 940E and 940EV



Sheet metal basket for 940EV

## 스페어 파트



Lock with keys



Set of casters

## 관련 제품



툴 캐리지 유로플러스



툴 캐리지 헤라클레스