

# Tool carriage Euromotion

940EM1

NEW



## Product features

- material: premium PLUS sheet metal
- central locking system with a lock and folding key
- lock with key included also foam keyring
- oil and acid resistant casters of a diameter of 125mm, one with brake, which blocks spinning and swiveling of the caster
- wide range of accessories
- blind nuts for fixing accessories are mounted on the carriage.
- coated with eco colour of Qualicoat quality standard
- static load capacity of carriage without casters: 1600kg
- dynamic load capacity of carriages: 500 kg

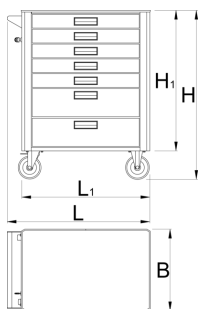
- maximum capacity of each drawer: 45kg
- 7 drawers (5x L 563 x W 365 x H 70mm, 2x L 563 x W 365 x H 150mm)
- basic dimensions with handle and casters L 780 x W 440 x H 923mm
- total volume of drawers: 140 litres
- drawers compatible with SOS tool trays 1/3, 2/3, 3/3

#### Advantages:

- full extension drawers with soft closing mechanism
- ergonomic handle for easy opening of drawer
- drawer fronts can be customized with graphic design as separate order
- improved colour durability

#### Why Choose Unior:

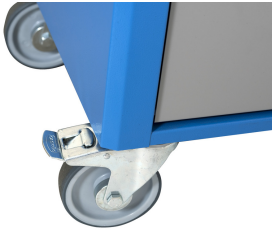
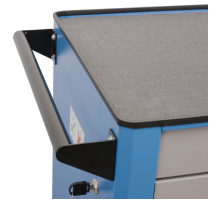
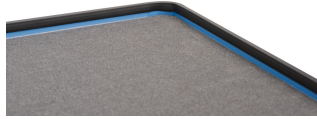
- Unior is a renowned name in the tool industry, synonymous with quality and reliability. With century of experience, Unior products are trusted by professionals worldwide for their superior performance and innovative design.



	<b>L</b>	<b>B</b>	<b>H</b>	<b>L1</b>	<b>H1</b>	
629589	780	440	923	700	768	53600

\* Images of products are symbolic. All dimensions are in mm, and weight in grams. All listed dimensions may vary in tolerance.

#### Usage (pictures)



## Spare parts



Lock with keys



Set of casters

## Related products



Tool carriage Europlus



Tool carriage Hercules