

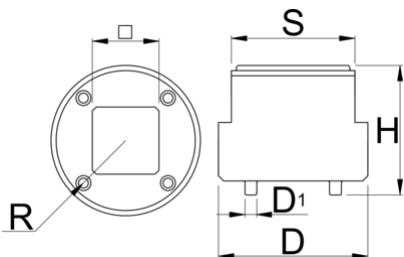
Crank cap tool for Sram DUB

1609.2DUB/5



Atributi proizvod

- Designed to install and remove Sram DUB self-extracting caps.
- Compatible with all Sram DUB cranks.
- Precision-engineered with CNC machined premium flex plus carbon steel for superior durability and performance.
- Integrated 1/2" drive fitting ensures compatibility with our ratchet, fixed handle, and torque wrenches for convenient use.
- Flats on the outside diameter of the tool enable the tool to be mount in the vice or used with a 24 mm open end wrench.





D

D1

H

S

R



629619

29

2.5

26

24

11.6

1/2"

81

* Slike proizvoda su simbolične. Sve dimenzije su u mm, masa je u g.

Upotreba (pictures)

