

Inner bearing puller

689/5ABI



产品属性

- 材料:优质铬钒钢
- 落锻, 完全淬火与回火
- surface finish: zinc plated according to ISO 2081:2018 (E)
- 符合人体工程学的重型双层材料组成的手柄

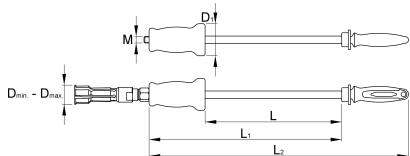
优势:

- Set includes 2 pcs of expandable collet for inner bearing dimensions 40-50mm, 50-60mm

用途:

- 用于拉拔不同类型轴承轴承从内侧夹住并拉出

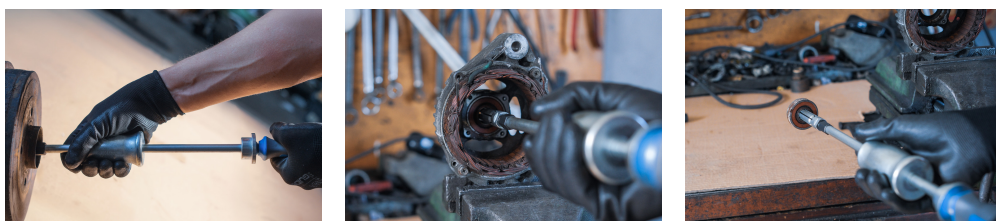
- Expandable collet 40-50mm is used for following types of bearings: 16008, 6008, 6208, 6308, 6408, 7308, 61808, 61908, 61809, 61909, 16009, 6009, 6309, 6409
- Expandable collet 50-60mm is used for following types of bearings: 61810, 61910, 16010, 6010, 6210, 6310, 6410, 61811, 61911, 16011, 6011, 6211, 6311, 6411, 61812, 61912, 16012, 6012, 6212, 6312, 6412
- The bearing is extracted by impact forces of 2kg sliding hammer



	D_{\downarrow}	D_{\uparrow}	D1	L	L1	L2	M	
629560	40	60	69	295	415	560	M14	5890

* Images of products are symbolic. All dimensions are in mm, and weight in grams. All listed dimensions may vary in tolerance.

用途 (pictures)



配件

689/2BI拉爪

Related products



内部轴承拉拔器