

Inner bearing puller

689/5ABI



Product features

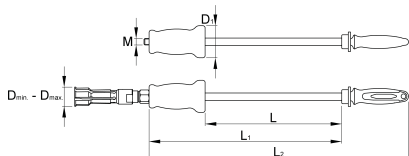
- material: premium chrome vanadium steel
- drop forged, entirely hardened and tempered
- surface finish: zinc plated according to ISO 2081:2018 (E)
- ergonomic heavy duty double component handle

Advantages:

- Set includes 2 pcs of expandable collet for inner bearing dimensions 40-50mm, 50-60mm

Usage:

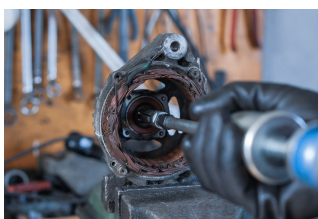
- It is used for extraction of different typ of bearing. Expandable collet grips inner bearing race. and pulls it out.
- Expandable collet 40-50mm is used for following types of bearings: 16008, 6008, 6208, 6308, 6408, 7308, 61808, 61908, 61809, 61909, 16009, 6009, 6309, 6409
- Expandable collet 50-60mm is used for following types of bearings: 61810, 61910, 16010, 6010, 6210, 6310, 6410, 61811, 61911, 16011, 6011, 6211, 6311, 6411, 61812, 61912, 16012, 6012, 6212, 6312, 6412
- The bearing is extracted by impact forces of 2kg sliding hammer



								
629560	40	60	69	295	415	560	M14	5890

* Images of products are symbolic. All dimensions are in mm, and weight in grams. All listed dimensions may vary in tolerance.

Usage (pictures)



Spare parts



Expandable collet for 689/5BI

Related products



Inner bearing puller